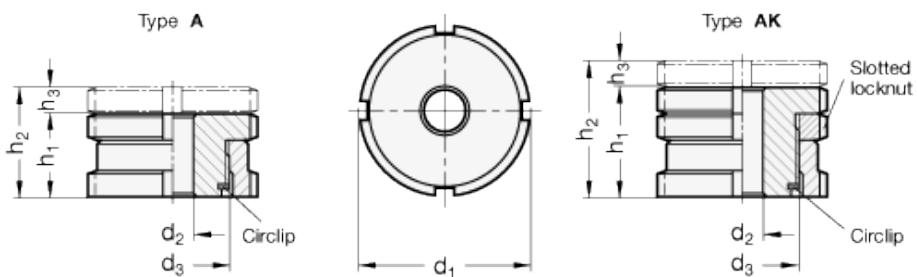


GN 350.1

Levelling sets



technical informations

Material

Zinc-plated steel (42 CrMo 4 V), blue passivated.

F_1 : max. total load.

F_2 : max. load after deduction of the max. preload for screws 8.8, $\mu = 0.125$.

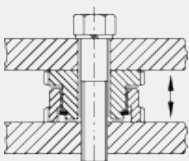
Standard versions available

- Version A: without locknut.
- Version AK: with lock nut.

Features and applications

Levelling sets GN 350.1 are used for levelling, adjusting and linking operations if small dimensions are given. They comprise a threaded upper sleeve and a female threaded lower sleeve. The fine thread allows a stepless and precise setting and locking using the C-Spanner DIN 1810. A locking ring serves as a height limiter for the max. height.

Application example



Accessories on request

Standard Elements	Main dimensions						for screw	Static load		C-Spanner	Weight
	Description	d ₁	d ₂	d ₃	h ₁	h ₂		h ₃	F ₁		F ₂
GN 350.1-25-5.5-A-ST	25	5.5	M15x1	15	19	4	M5	40	33.4	DIN 1810-A25-28	45
GN 350.1-25-6.6-A-ST	25	6.6	M15x1	15	19	4	M6	40	30.7	DIN 1810-A25-28	43
GN 350.1-32-6.6-A-ST	32	6.6	M20x1	18	23	5	M6	65	55.7	DIN 1810-A30-32	93
GN 350.1-32-9-A-ST	32	9	M20x1	18	23	5	M8	65	48	DIN 1810-A30-32	87
GN 350.1-32-11-A-ST	32	11	M20x1	18	23	5	M10	65	37.9	DIN 1810-A30-32	83
GN 350.1-45-11-A-ST	45	11	M30x1.5	22	29	7	M10	120	92.9	DIN 1810-A45-50	216
GN 350.1-45-13.5-A-ST	45	13.5	M30x1.5	22	29	7	M12	120	80.4	DIN 1810-A45-50	207
GN 350.1-45-17.5-A-ST	45	17.5	M30x1.5	22	29	7	M16	120	45.5	DIN 1810-A45-50	188
GN 350.1-58-17.5-A-ST	58	17.5	M40x1.5	28	37	9	M16	210	136	DIN 1810-A58-62	450
GN 350.1-58-22-A-ST	58	22	M40x1.5	28	37	9	M20	210	90	DIN 1810-A58-62	418
GN 350.1-58-26-A-ST	58	26	M40x1.5	28	37	9	M24	210	37	DIN 1810-A58-62	386
GN 350.1-70-22-A-ST	70	22	M50x1.5	33	43	10	M20	330	210	DIN 1810-A68-75	788
GN 350.1-70-26-A-ST	70	26	M50x1.5	33	43	10	M24	330	157	DIN 1810-A68-75	744
GN 350.1-70-33-A-ST	70	33	M50x1.5	33	43	10	M30	330	53	DIN 1810-A68-75	668
GN 350.1-80-26-A-ST	80	26	M60x2	38	50	12	M24	495	322	DIN 1810-A80-90	1135
GN 350.1-80-33-A-ST	80	33	M60x2	38	50	12	M30	495	218	DIN 1810-A80-90	1060
GN 350.1-80-39-A-ST	80	39	M60x2	38	50	12	M36	495	101	DIN 1810-A80-90	965
GN 350.1-25-5.5-AK-ST	25	5.5	M15x1	20	24	4	M5	40	33.4	DIN 1810-A25-28	60
GN 350.1-25-6.6-AK-ST	25	6.6	M15x1	20	24	4	M6	40	30.7	DIN 1810-A25-28	58
GN 350.1-32-6.6-AK-ST	32	6.6	M20x1	24	29	5	M6	65	55.7	DIN 1810-A30-32	126
GN 350.1-32-9-AK-ST	32	9	M20x1	24	29	5	M8	65	48	DIN 1810-A30-32	118
GN 350.1-32-11-AK-ST	32	11	M20x1	24	29	5	M10	65	37.9	DIN 1810-A30-32	115
GN 350.1-45-11-AK-ST	45	11	M30x1.5	29	36	7	M10	120	92.9	DIN 1810-A45-50	218
GN 350.1-45-13.5-AK-ST	45	13.5	M30x1.5	29	36	7	M12	120	80.4	DIN 1810-A45-50	308
GN 350.1-45-17.5-AK-ST	45	17.5	M30x1.5	29	36	7	M16	120	45.5	DIN 1810-A45-50	254
GN 350.1-58-17.5-AK-ST	58	17.5	M40x1.5	37	46	9	M16	210	136	DIN 1810-A58-62	624
GN 350.1-58-22-AK-ST	58	22	M40x1.5	37	46	9	M20	210	90	DIN 1810-A58-62	522
GN 350.1-58-26-AK-ST	58	26	M40x1.5	37	46	9	M24	210	37	DIN 1810-A58-62	577
GN 350.1-70-22-AK-ST	70	22	M50x1.5	44	54	10	M20	330	210	DIN 1810-A68-75	1153
GN 350.1-70-26-AK-ST	70	26	M50x1.5	44	54	10	M24	330	157	DIN 1810-A68-75	1087
GN 350.1-70-33-AK-ST	70	33	M50x1.5	44	54	10	M30	330	53	DIN 1810-A68-75	974
GN 350.1-80-26-AK-ST	80	26	M60x2	49	61	12	M24	495	322	DIN 1810-A80-90	1565
GN 350.1-80-33-AK-ST	80	33	M60x2	49	61	12	M30	495	218	DIN 1810-A80-90	1440
GN 350.1-80-39-AK-ST	80	39	M60x2	49	61	12	M36	495	101	DIN 1810-A80-90	1340